

# CICC Lived Expert Consultant Recruitment Information Session



February 13 and 15, 2024

U.S. Department of Health and Human Services



OFFICE OF HUMAN  
SERVICES POLICY

1

1

## Agenda

- Children's Interagency Coordinating Council (CICC) Background
- Role of the Lived Expert Consultant
- Other Opportunities for Lived Experts at ASPE
- Support for the Role
- Tips for Preparing Your Application, Resume, and Interview
- Next Steps



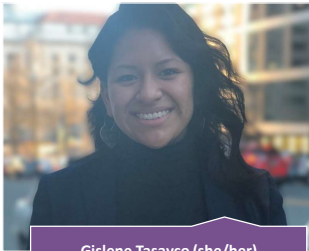
ASPE  
ASSISTANT SECRETARY FOR  
PLANNING AND EVALUATION

OFFICE OF HUMAN  
SERVICES POLICY

2

2

## Presenters



**Gislene Tasayco (she/her)**  
American Institutes for Research  
Technical Assistance Consultant



**Laura Erickson (she/her)**  
Office of the Assistant Secretary for  
Planning and Evaluation  
Social Science Analyst



**Dianna Ruberto (she/her)**  
Office of the Assistant Secretary for  
Planning and Evaluation  
National Poverty Fellow



**Madison Dao-Whitten (she/her)**  
Office of the Assistant Secretary for  
Planning and Evaluation  
CICC Coordinator



**ASPE**  
ASSISTANT SECRETARY FOR  
PLANNING AND EVALUATION

OFFICE OF HUMAN  
SERVICES POLICY

3

3

## CICC Background

- In December 2022, Congress charged HHS with establishing the Children’s Interagency Coordinating Council (CICC).
- Within HHS, the Office of the Assistant Secretary for Planning and Evaluation (ASPE), Office of Human Services Policy (HSP) is leading the effort to stand up and support the CICC.
- Congress stated that the CICC will:
  - **foster greater coordination and transparency on child policy across agencies and**
  - **examine and periodically report on a broad array of cross-cutting issues affecting child well-being.**
- Congress also instructed HHS to contract with the National Academies of Sciences, Engineering, and Medicine (NASEM) to analyze federal policies that have affected child poverty.



**ASPE**  
ASSISTANT SECRETARY FOR  
PLANNING AND EVALUATION

OFFICE OF HUMAN  
SERVICES POLICY

4

4

## Context Setting

- Lived experience, in this context, is defined as individuals who have direct, first-hand experience with poverty and have accessed and/or are eligible for programs and services for children, youth, and families experiencing poverty.
- Poverty, in this context, is defined as not having enough resources to meet basic needs.



**ASPE**  
ASSISTANT SECRETARY FOR  
PLANNING AND EVALUATION

OFFICE OF HUMAN  
SERVICES POLICY



5

5

## Lived Expert Recruitment Criteria

- Minimum Requirement
  - Possess **direct, first-hand lived experience** with poverty as a child, parent, and/or caregiver
  - At least 18 years of age
  - Able to commit up to 20 hours through December 2024
  - Interested in efforts related to child poverty and well-being
  - Able to successfully interact with people from diverse backgrounds



**ASPE**  
ASSISTANT SECRETARY FOR  
PLANNING AND EVALUATION

OFFICE OF HUMAN  
SERVICES POLICY

6

6

## Relevant Background/Experience

- Programs and services
- Peer support/navigator
- Research activities
- Policy activities
- Workforce training/development
- Engaging/partnering with cross systems agencies
- Efforts related to diversity, equity, and/or inclusion



**ASPE**  
ASSISTANT SECRETARY FOR  
PLANNING AND EVALUATION

OFFICE OF HUMAN  
SERVICES POLICY

7

7

## Potential Lived Expert Engagement Opportunities

Inform strategies and  
research projects

Identify relevant and  
innovative state and  
community policies,  
programs, and practices

Participate in listening  
sessions, key informant  
interviews, and  
technical working  
groups

Contribute to the  
quarterly council  
newsletters

Present at events and  
meetings

Review and provide  
feedback on draft  
materials

Support the  
dissemination of  
research



**ASPE**  
ASSISTANT SECRETARY FOR  
PLANNING AND EVALUATION

OFFICE OF HUMAN  
SERVICES POLICY

8

8

## Other Opportunities for Lived Experts at ASPE



**ASPE**  
ASSISTANT SECRETARY FOR  
PLANNING AND EVALUATION

OFFICE OF HUMAN  
SERVICES POLICY

9

9

## ASPE's Mission

The Office of the Assistant Secretary for Planning and Evaluation (ASPE) advises the Secretary of the U.S. Department of Health and Human Services (HHS) on policy development in health, disability, human services, data, and science; and provides advice and analysis on economic policy.

ASPE leads special initiatives; coordinates the Department's evaluation, research, and demonstration activities; manages cross-Department planning activities; conducts research and evaluation studies; and develops policy analyses.



**ASPE**  
ASSISTANT SECRETARY FOR  
PLANNING AND EVALUATION

OFFICE OF HUMAN  
SERVICES POLICY

10

10

## ASPE's Office Human Service Policy

RES AND CAPACITIES — Not Just Nerds!

*Small but diverse staff*

A broad *cross-cutting perspective* on how individual programs interact

Ability to *coordinate* across the department and the federal government

Close working *relationships* with program leadership and staff, and across the federal government

Conduct quick and medium-term *policy research* ourselves and through contracts

Robust *analytic capabilities* to help determine how different policy options could work best

Known in HHS and across the federal government as a go-to office for analysis of *poverty trends* and measurement issues



**ASPE**

ASSISTANT SECRETARY FOR  
PLANNING AND EVALUATION

OFFICE OF HUMAN  
SERVICES POLICY

11

11

## Office of Human Services Policy Priorities

- **Enhancing equity, inclusion, diversity, and access.**
  - Centering work in the experiences and needs of individuals, families, and communities.
  - Identifying root causes
- **Amplifying evidence around prevention of social welfare challenges and crisis.**
- **Identifying aligned well-being metrics for program adoption.**
  - Multiple dimensions of person/family/community strengths and needs to prompt data-informed dialogue, alignment, and coordination
- **Highlighting actionable information.**



**ASPE**

ASSISTANT SECRETARY FOR  
PLANNING AND EVALUATION

OFFICE OF HUMAN  
SERVICES POLICY

12

12

## Support for Lived Expert Consultants

The American Institutes for Research® (AIR) is a nonpartisan, not-for-profit organization that conducts behavioral and social science research and delivers technical assistance. Our mission is to generate and use rigorous evidence that contributes to a better, more equitable world.

- Training and Skill Development (Capacity Building)
- Navigating Potential CICC Activities
- Preparing for CICC Activities
- Providing Attentive and Supportive Communication



**ASPE**  
ASSISTANT SECRETARY FOR  
PLANNING AND EVALUATION

OFFICE OF HUMAN  
SERVICES POLICY

13

13

## Preparing Your Resume, Application, & Interview



### Personal Experience

Lived expertise is the knowledge and understanding that comes from personal experience. Carefully review the application instructions to make sure you understand the role and tailor your application.



### You as the Expert

People with lived experience have unique perspectives that cannot be replicated and is valuable to inform and improve systems, research, policies, practices, and programs. Articulate your skills, experiences, and achievements that make you a strong candidate. Use specific examples.



### The Context

This is an opportunity to assist in identifying relevant and innovative federal, state, and community policies, programs, and practices. Highlight your motivations, goals, and why you are the ideal candidate for the role.



### Be Honest and Authentic

Stories are powerful ways of sharing lived experiences that can often be difficult to quantify or list on a resume. Be authentic in your application and demonstrate your enthusiasm for the opportunity.



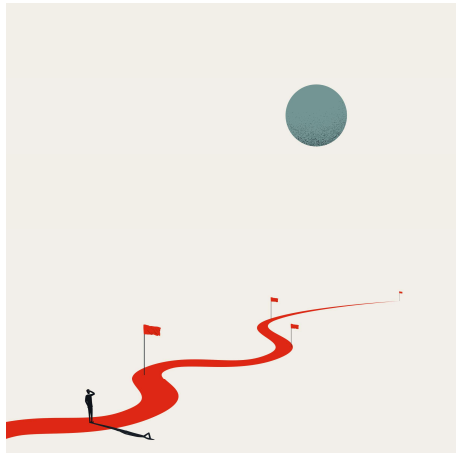
**ASPE**  
ASSISTANT SECRETARY FOR  
PLANNING AND EVALUATION

OFFICE OF HUMAN  
SERVICES POLICY

14

14

## Next Steps



1. Consider **applying** for the Lived Expert Consulting role and/or **share the opportunity** with your networks, applications due **February 23, 2024**
2. Finalists notified of selection for interviews, **Early March**
3. Virtual interviews for finalists, **Mid - Late March**
4. Announcement of selected class and Welcome call(s), **Early April**
5. **Stay connected** to the CICC, subscribe to the newsletter and follow youth.gov on social media



**ASPE**  
ASSISTANT SECRETARY FOR  
PLANNING AND EVALUATION

OFFICE OF HUMAN  
SERVICES POLICY

15

15

## Contact Us

- Visit youth.gov for the Lived Experience Consultant Informational Session recordings and related material: <https://youth.gov/feature-article/newly-formed-childrens-interagency-coordinating-council-seeks-lived-expert>
- If you have additional questions, you can reach out to Gislene Tasayco, [gtasayco@air.org](mailto:gtasayco@air.org).

**Thank you for joining us today!**



**ASPE**  
ASSISTANT SECRETARY FOR  
PLANNING AND EVALUATION

OFFICE OF HUMAN  
SERVICES POLICY

16

16